

Date: Mon, 16 Dec 2002 10:19:46 -0500 (EST)
From: Fernando Adrian Das Neves <fdasneve@csgrad.cs.vt.edu>
Subject: Screenshots from latest TALOSS
To: "Ronald D. Kriz" <rkriz@vt.edu>, John Kelso <kelso@vt.edu>

These are screenshots from the latest version of TALOSS.

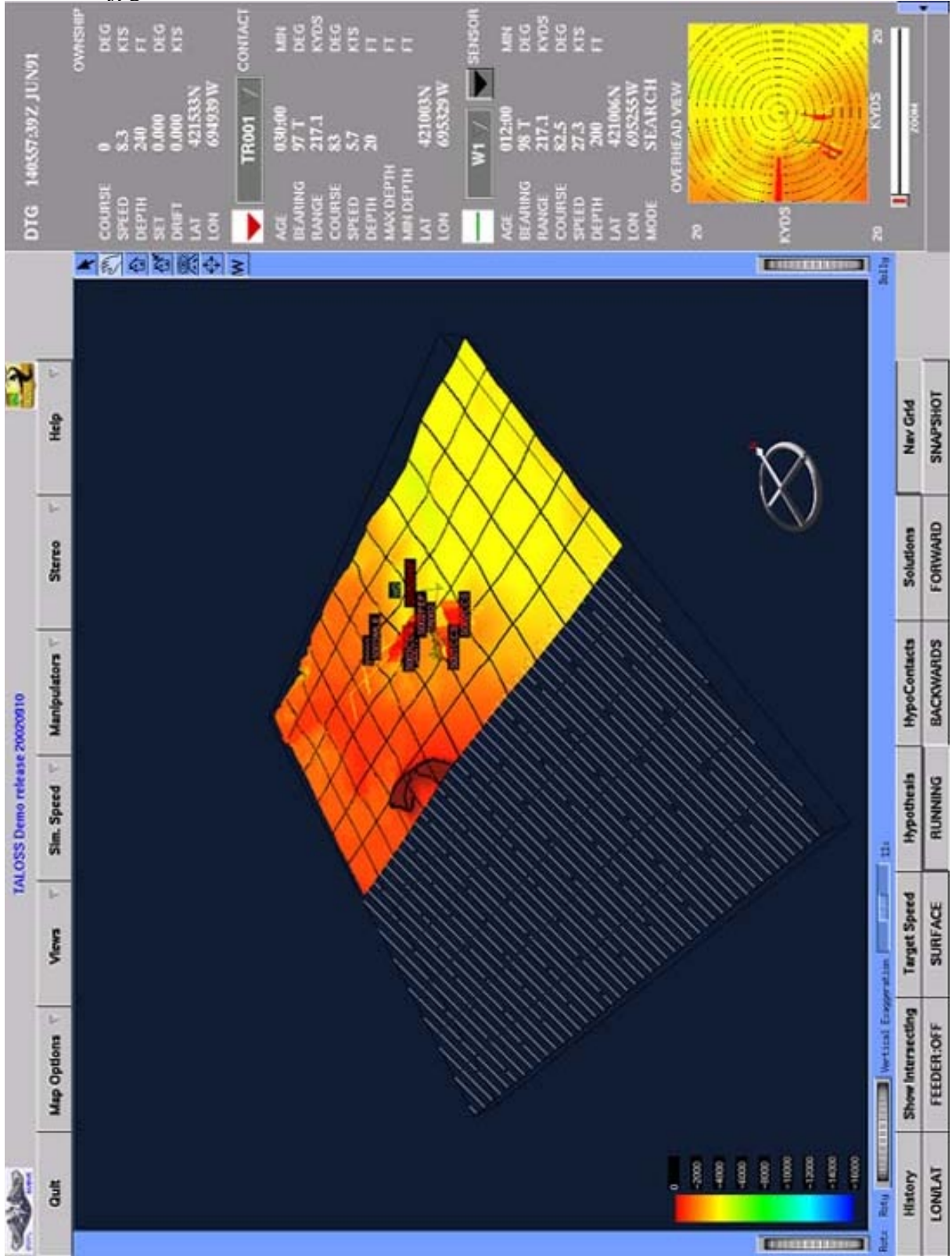
1) **overview.jpg**: general view, showing coordinte grid. The area marked with the line pattern is an area for which there is no bathymetry available. Something I did and is not visible in this screens is that the 3d icons for contacts are now colored according to threat level (friend, hostile, unknown) and that color changes dynamically as the threat level changes.

2) **close-up.jpg**: a closer view, this time showing range rings (rings that mark distance from ownship)

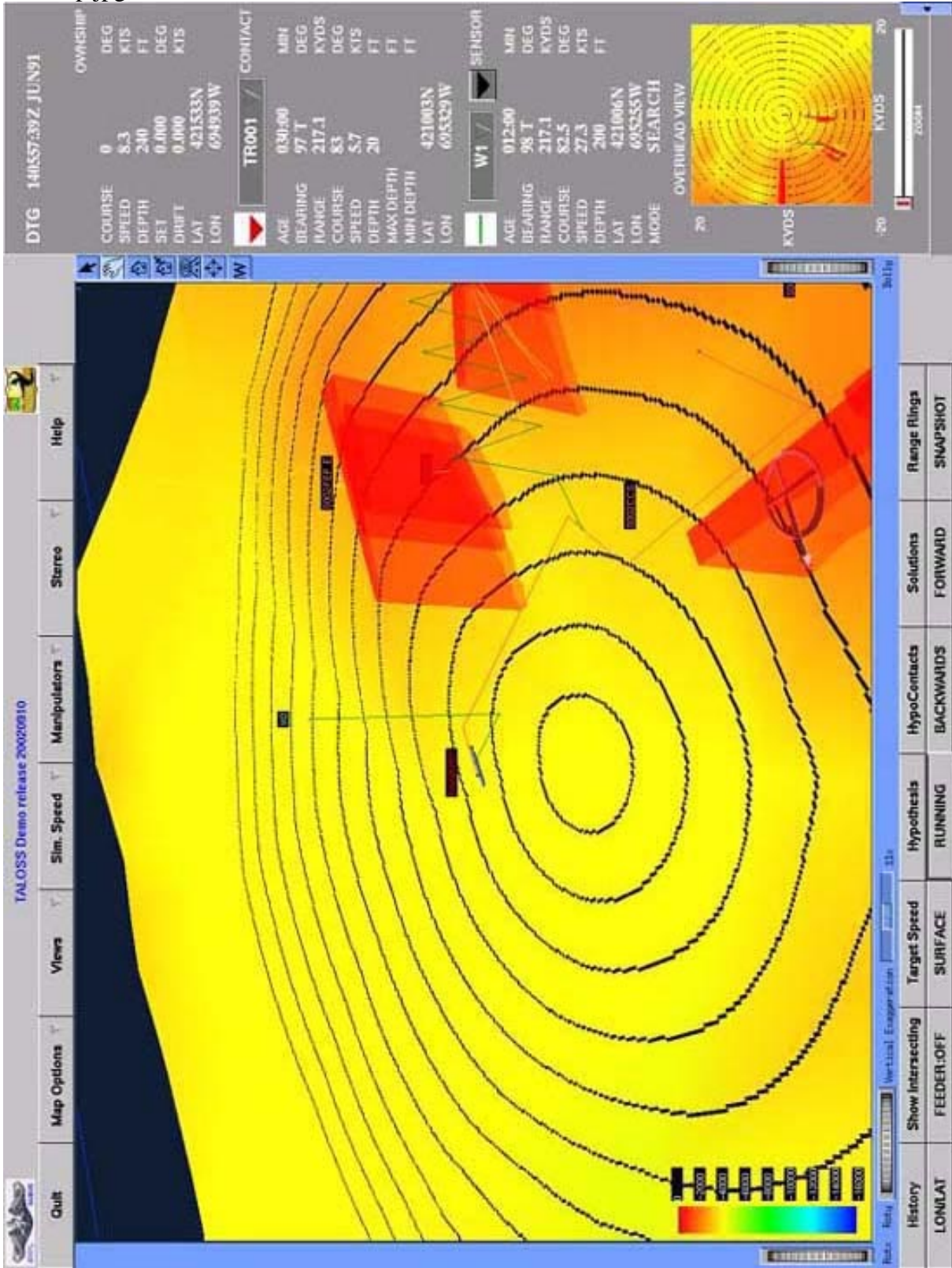
3) **sliding.jpg**: a picture that shows that is possible to "slide" the visible area across the bathymetry, and all contact will be shown in the correct relative position.

Fernando

Overview.jpg



close-up.jpg



Sliding.jpg

